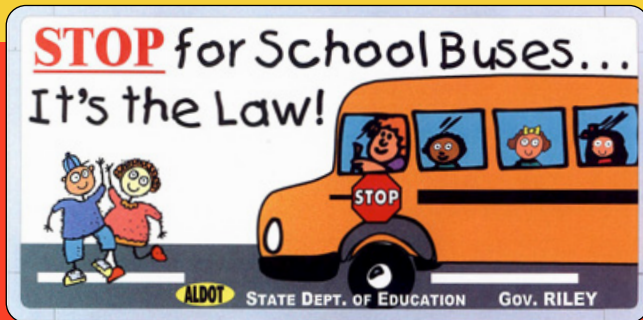


# Alabama's NEW School Bus Stop Law

Effective October 1, 2006

*"The driver of a vehicle upon meeting or overtaking from either direction any school bus which has stopped for the purpose of receiving or discharging any school children on a highway, on a roadway, on school property, or upon a private road shall bring the vehicle to a complete stop before reaching the school bus ..."*

*"The driver of a vehicle upon a divided highway having four or more lanes which permits at least two lanes of traffic to travel in opposite directions need not stop the vehicle upon meeting a school bus which is stopped in the opposing roadway ..."*



## STOP FOR SCHOOL BUSES ... IT'S THE LAW!

**1st Offense:** .....\$150 - \$300 Fine

**2nd Offense:** .....\$300 - \$500 Fine, 100 hours community service,  
30 day driver license suspension

**3rd Offense:** .....\$500 - \$1000 Fine, 200 hours community service,  
90 day driver license suspension

**4th Offense:** .....\$1000 - \$3000 Fine, Class "C" Felony,  
one year driver license suspension

**REPORT VIOLATIONS OF THE SCHOOL BUS  
PASSING LAW TO LOCAL LAW ENFORCEMENT!**

Alabama Department of Education · Pupil Transportation Section  
5303 Gordon Persons Building · 50 North Ripley Street  
Montgomery, Alabama 36130-2101  
phone: (334) 242-9730 · fax: (334) 353-7953 · www.alsde.edu

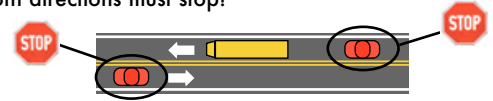


### Check our Web site for:

Alabama School Bus Illegal Passing Survey Results  
School Bus Safety Brochure  
Requirements to Drive a School Bus in Alabama  
Alabama Pupil Transportation Facts

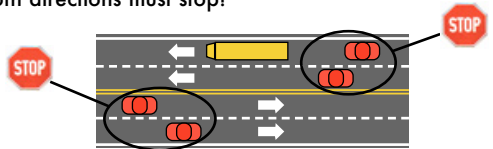
#### 1 Two-lane roadway:

When school bus stops for passengers, all traffic from both directions must stop!



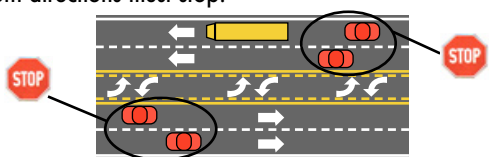
#### 2 Four-lane roadway without a median separation:

When school bus stops for passengers, all traffic from both directions must stop!



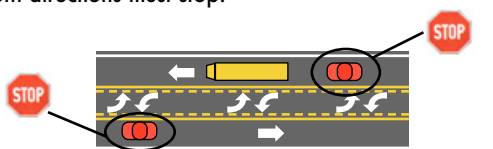
#### 3 Roadway of four lanes or more with a center turning lane:

When school bus stops for passengers, all traffic from both directions must stop!



#### 4 Two-lane roadway with a center turning lane:

When school bus stops for passengers, all traffic from both directions must stop!



#### 5 Divided highway of four lanes or more with a median separation:

When school bus stops for passengers, only traffic following the bus must stop.

